

Our **Professional Rack Mount Series UPS Systems** mark a continuation in the tradition of excellence our engineering team has achieved. With many top features and power to spare, they mark the right choice for the very demanding **mid-Business, Corporate Data Centres, Server-Networking-Workstation, and Industrial-Class application** environments. They are designed for special applications that are very mission critical, and for those who value versatility, concentrated manageability, administration flexibility and performance based on a stable multi-purpose industrial-class platform.

These series have been developed on a **Line-Interactive, Pure Sine-Wave** hardware platform. With several Battery & Surge backed outlets, enhanced features and a highly controlled operation, you can go ahead and connect onto them your vital systems and related peripherals, being ready in case of an extensive power outage!

Industrial-Class features within these models make them top and reliable performers with easy usage and manageability, protecting your business investments for many years to come! We are proud to recommend these systems to you!



Model: PR 3000E

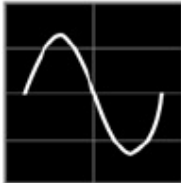


Models: PR 1500 / 2200E



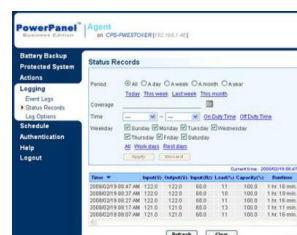
- Pure Sine-Wave Output Power for special Applications
- Line Interactive Technology and CPU based full Digital Control
- Automatic Voltage Regulator
- Optional Rack-Mount (2U) or Stand-Up Design
- EMI, RFI, Surge & Lighting Spike Protection
- Phone, Fax, Modem, DSL, and Network Protection
- Elaborate Business Power Management Software Included
- Programmable Brownout and Over-Voltage Protection
- We offer 50,000.- EUR Connected Equipment Life Time Guarantee
- Auto-Restart, Auto-Charge, and Scheduled Shutdown Function
- Easy and Fast Serviceability with Hot Swappable Batteries
- Multiple Interface Ports for simultaneously connecting two Servers/Computers
- SNMP/HTTP optional Communication Module for Remote Access
- High Performance Output, High Reliability & Elaborate Features suitable for the multi-purpose demanding Environments

PURE SINE-WAVE OUTPUT



For those applications that require pure *Sine Wave* power, CyberPower provides UPS models, with True Sine Wave output, also known as *Pure Sine Wave*. They are designed for electronic devices that have *Pure Factor Correction (PFC)* Power Supplies as well as for small AC motors and other devices that need true sine-wave power in order to function properly.

PowerPanel® Business Edition Management S/W



AUTO-SHUTDOWN SOFTWARE
 CyberPower PowerPanel® Business Edition Management Software, is Compatible with Windows VISTA, XP, 2000 Pro., ME, 98, Windows Server 2003, Mac and Linux.

CAPACITY & RUN-TIME:

- **PR 1500E:** 1500VA or 1000W. **PR 2200E:** 2200VA or 1600W. **PR 3000E:** 3000VA or 2200W
- TYPICAL RUNTIME: **PR 1500E:** 98 min. **PR 2200E:** 112 min. **PR 3000E:** 131 min

INPUT POWER:

- Voltage Range: 170V ~ 280V
- Frequency Range: 50Hz / 60 Hz (+/- 3Hz) auto-sensing

OUTPUT POWER:

- On Battery Output Voltage: Pure Sine-Wave at 230V (+/- 5%)
- On Battery Output Frequency: 50Hz / 60 Hz (+/- 1%)
- Typical Transfer Time: 4ms
- Overload Protection Scheme: On Main Power by *Circuit Breaker*, and on Battery Power by *Internal Current Limiting*
- Automatic Voltage Regulator (AVR): Double Boost & Single Buck

BATTERY INFORMATION:

- Sealed Maintenance-Free Lead-Acid Batteries, Hot Swappable, and Replaceable by User
- **PR 1500E:** 12V, 7 AH x 4. **PR 2200E:** 12V, 9 AH x 4. **PR 3000E:** 12V, 7 AH x 8
- Typical Recharge Time: 8 Hours

STATUS INDICATORS:

- Power-On LED
- Using Battery LED
- AVR Condition LED
- Wiring Fault LED
- Load Level LED array
- Battery level LED array
- Audio Alarms for: Overload, On-Battery, and Low-Battery

RECEPTACLES:

- **PR 1500/2200E:** Six IEC 320 C13 Plugs. [4 with Battery Backup & Surge Protection, 2 with Surge Protection Only]
- **PR 3000E:** Three IEC 320 C13 Plugs & Two Schuko or similar type. [All with Battery Backup & Surge Protection]
- RJ11/RJ45 Input/Output for Surge Protection

CONNECTORS:

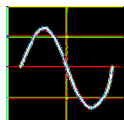
- 2 x RS-232 Serial Connectors to Computers [*USB to Serial Converter cable included*]
- External Battery Pack Connector [*only for the PR 3000E model*]
- Optional SNMP Communication Module

MANAGEMENT and CONTROL:

- Manual Self-Test
- Auto Re-Charge and Auto Re-Start
- Programmable Brownout and Over-Voltage Protection
- Scheduled Shutdown Function
- SNMP/HTTP optional adapter for Remote Access & Management via LAN/Internet
- Power Panel® Business Edition elaborate software for Computer Connectivity and Management Control

PHYSICAL INFORMATION:

Dimensions: **PR 1500E/2200E:** 433 (L) x 388 (W) x 88 [2U] (H) mm. **PR 3000E:** Same as the other models x 2
Weight: **PR 1500E:** 26.4kg. **PR 2200E:** 32.1kg. **PR 3000E:** 55.5kg
Storage Temperature: -15°C ~ +45°C
Operating Temperature: 0°C ~ 40°C
Operating Humidity: 0%~95% non-condensed



DISTRIBUTED BY:

CyberPower's
Manufacturing
Facilities are
ISO 9001:2000,
ISO 14000, and
QC080000
Approved